



World up
Keep
Climbing

INTERNATIONAL FEDERATION OF **SPORT CLIMBING**
www.ifsc-climbing.org

IFSC CLIMBING WORLD CUP

2018 IFSC CLIMBING WORLD CUP

LEAD

BRIANÇON - FRANCE

20-21 JULY 2018

ORGANISED BY:



Event Organiser's Partners:



IFSC Partners:





World up
Keep
Climbing

INTERNATIONAL FEDERATION OF **SPORT CLIMBING**
www.ifsc-climbing.org

IFSC CLIMBING WORLD CUP

ORGANISATION

ORGANISER

French Federation of Sport Climbing and Mountaineering / Briançon Escalade

Organiser Website: www.ffme.fr

CONTACTS LOCAL ORGANISER:

Event Organiser: Franck Prigent: direction@mondial-escalade.fr

Sport Manager: Vincent Caussé: v.causse@ffme.fr

Media: Florian Kunckler: f.kunckler@ffme.fr

Jean Gaboriau: communication@mondial-escalade.fr

CONTACT NATIONAL FEDERATION: Vincent Caussé / v.causse@ffme.fr / +336.87.33.71.59

REGISTRATION

DEADLINE: The deadline for team registration is 5 days before event 1st day at midnight CET: **July 15, 2018**

START LIST: Registered competitors not confirmed as present **July 19, 2018** during the registration time will be deleted from the Official Starting List.

IMPORTANT:

Please send a list of your Team Officials (manager, coaches and medical staff) and the mobile phone number of the team manager together with arrival information of the team to: f.leonardon@ffme.fr

CONFIRMATION OF ATTENDANCE FOR DELAYED ARRIVAL:

In case a team is not able to make the registration in time due to flight delays or other unpredictable reasons, please contact the IFSC Technical Delegate:

GRAEME ALDERSON: +44.794.902.4498 / Graeme@climbingworks.com

Event Organiser's Partners:



IFSC Partners:





World up
Keep
Climbing

INTERNATIONAL FEDERATION OF **SPORT CLIMBING**
www.ifsc-climbing.org

IFSC CLIMBING WORLD CUP

TRAVEL DETAILS

VISA:

If you need invitations for visa, please fill the form at the following address: <http://www.ffme.fr/visa>

HOW TO GET THERE:

<https://www.serre-chevalier.com/en/summer/about-the-valley/getting-here/>

ACCOMMODATION

<http://www.cippa.com/>

<http://www.serre-chevalier.com/en/summer/>

COMPETITION VENUE

Competition is held outside, in a **new place**: **PARC DES SPORTS - avenue Jean Moulin 05100 Briançon**

Event Organiser's Partners:



IFSC Partners:

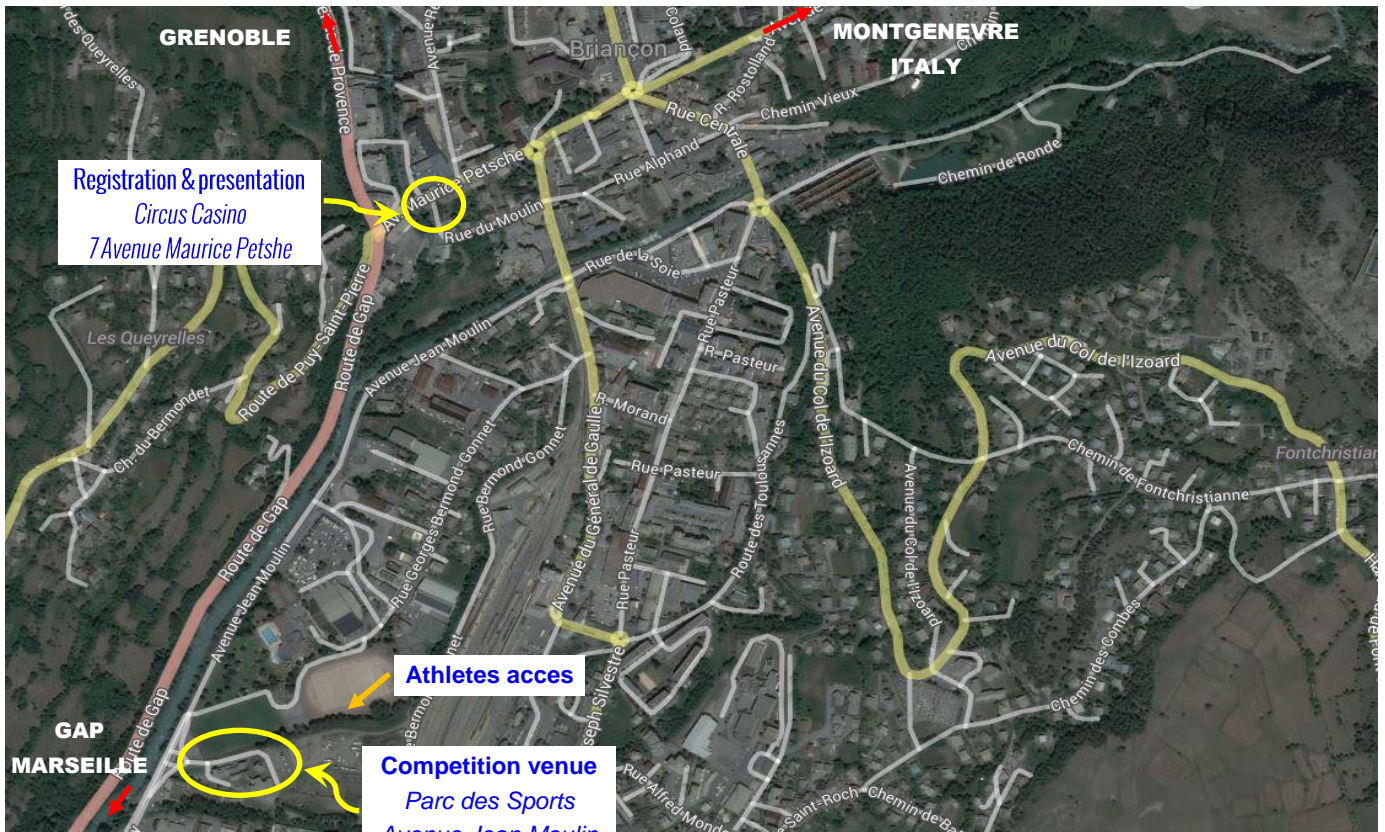




INTERNATIONAL FEDERATION OF **SPORT CLIMBING**
www.ifsc-climbing.org

World up
Keep
Climbing

IFSC CLIMBING WORLD CUP



Event Organiser's Partners:



IFSC Partners:





World up
Keep
Climbing

INTERNATIONAL FEDERATION OF **SPORT CLIMBING**
www.ifsc-climbing.org

IFSC OFFICIALS

- **IFSC Technical Delegate:** Graeme ALDERSON (GBR)
- **IFSC Jury President:** Johannes ALTNER (GER)
- **IFSC Judge:** David MORA GARCIA (ESP)
- **IFSC Chief Route Setter:** Alberto GNERRO (ITA)
- **IFSC Route setters:** Julien GRAS (FRA), Jan ZBRANEK (CZE)

IFSC CLIMBING WORLD CUP

Event Organiser's Partners:



IFSC Partners:





World up
Keep
Climbing

INTERNATIONAL FEDERATION OF **SPORT CLIMBING**
www.ifsc-climbing.org

PROVISIONAL PROGRAMME (LOCAL TIME)

IFSC CLIMBING WORLD CUP

THURSDAY 19 JULY		CIRCUS CASINO - 7 AVENUE MAURICE PETSHE
	17.00-18.30	Registration
	19.00	Technical Meeting
	19.45	Opening ceremony (competition venue) Mandatory for: - one athlete per team (flag bearer) - the 8 first men and women of the 2018 world cup lead ranking present in Briançon
FRIDAY 20 JULY	QUALIFICATION	COMPETITION VENUE - PARC DES SPORTS
	07.00	Warming Zone Open
	09.00-15.00	Qualification Men and Women
	SEMI-FINAL	
	17.00-18.30	Isolation Zone Men & Women Semi-Finals
	19.00	Observation Women
	19.10	Observation Men
	19.30-22.00	Semi-Finals Men & Women
SATURDAY 21 JULY	FINAL	COMPETITION VENUE - PARC DES SPORTS
	17.30-18.30	Isolation Zone Men Final
	19.30	Athletes Presentation and observation time followed by Men Final
	19.00-20.00	Isolation Zone Women Final
	21.00	Athletes Presentation and observation time followed by Women Final
	22.00	Award Ceremony

Event Organiser's Partners:



IFSC Partners:

