



World up  
Keep  
Climbing

INTERNATIONAL FEDERATION OF **SPORT CLIMBING**

[www.ifsc-climbing.org](http://www.ifsc-climbing.org)

**IFSC CLIMBING WORLD CUP**

# 2017 IFSC CLIMBING WORLD CUP

**LEAD & SPEED**

**ARCO - ITALY**

**25-26 AUGUST 2017**

**ORGANISED BY:**



IFSC PARTNERS

**FORCE**



**ENTRE**





World up  
Keep  
Climbing

INTERNATIONAL FEDERATION OF **SPORT CLIMBING**

[www.ifsc-climbing.org](http://www.ifsc-climbing.org)

# IFSC CLIMBING WORLD CUP

## ORGANISATION

Name of the Organiser: S.S.D. ARRAMPICATA SPORTIVA ARCO - FASI

Address of the Organiser: Via Caproni Maini 26e 38062 ARCO TN - ITALY

Competition Website: <http://rockmasterfestival.com/2017/en/ifsc-climbing-world-cup-en/>

Contacts Local Organiser:

Technical & Sport Manager: Angelo Seneci: mobile: +39 348 8717436 - email: [angelo.seneci@alice.it](mailto:angelo.seneci@alice.it)

Accounts & Office: phone: +39 0464 472567 - email: [ssd@rockmaster.com](mailto:ssd@rockmaster.com)

Press Office: mobile: +39 329 4916739- email: [Marta.negri@greenmedialab.com](mailto:Marta.negri@greenmedialab.com)

Marketing: Sportmaker - email: [michela.toninel@sportmaker.it](mailto:michela.toninel@sportmaker.it)

Web Manager: phone: Stefano Bouchs +39 02 91320415 [stefano.bouchs@greenmedialab.com](mailto:stefano.bouchs@greenmedialab.com)

Other information: email: [ssd@rockmaster.com](mailto:ssd@rockmaster.com)

## REGISTRATION

**DEADLINE:** The deadline for team registration is 5 days before the 1<sup>st</sup> day of the event at midnight CET: August 20, 2017.

**START LIST:** Registered competitors not confirmed as present by August 24, 2017 will be deleted from the Official Starting List

## IMPORTANT

Please send a list of your Team Officials (manager, coaches and medical staff) and the mobile phone number of the team manager together with arrival information of the team to: [ssd@rockmaster.com](mailto:ssd@rockmaster.com) / [angelo.seneci@alice.it](mailto:angelo.seneci@alice.it)

## CONFIRMATION OF ATTENDANCE FOR DELAYED ARRIVAL:

In case a team is not able to make the registration in time due to flight delays or other unpredictable reasons, please contact the IFSC Technical Delegate:

**NAME:** Christophe Billon: +33 6 16 41 46 64 [christophe.billon@ifsc-climbing.org](mailto:christophe.billon@ifsc-climbing.org)



IFSC PARTNERS





World up  
Keep  
Climbing

INTERNATIONAL FEDERATION OF **SPORT CLIMBING**  
www.ifsc-climbing.org

**IFSC CLIMBING WORLD CUP**

**TRAVEL DETAILS**

**VISA**

If you need a visa invitation, please contact [segreteria@federclimb.it](mailto:segreteria@federclimb.it) and in copy to [ssd@rockmaster.com](mailto:ssd@rockmaster.com) prior to July 15, 2017.

First Name	Last Name	Place of Birth	Nationality	Passport Number	Expiration date	Addresses	Phone Number or Email	Occupation	Place of Application

Please do not forget to attach a scanned passport copy

**HOW TO GET TO ARCO**

**By Plane**

The nearest airports are Verona, Milano or Munich.

From the airport you have to take a shuttle to the train station, then by train you can reach Rovereto and Arco.

**By Train**

For those travelling by **TRAIN** the nearest railway station is Rovereto (on the Verona/Innsbruck line) which is 20 km from Arco. A public bus service connects Rovereto to Arco

**By car :**

If you wish to reach Arco by **CAR** the motorway A22 (Modena-Brennero) is the fastest way.

The exit is "Rovereto- Sud - Lago di Garda nord" 17 km from Arco.



IFSC PARTNERS





INTERNATIONAL FEDERATION OF **SPORT CLIMBING**  
www.ifsc-climbing.org

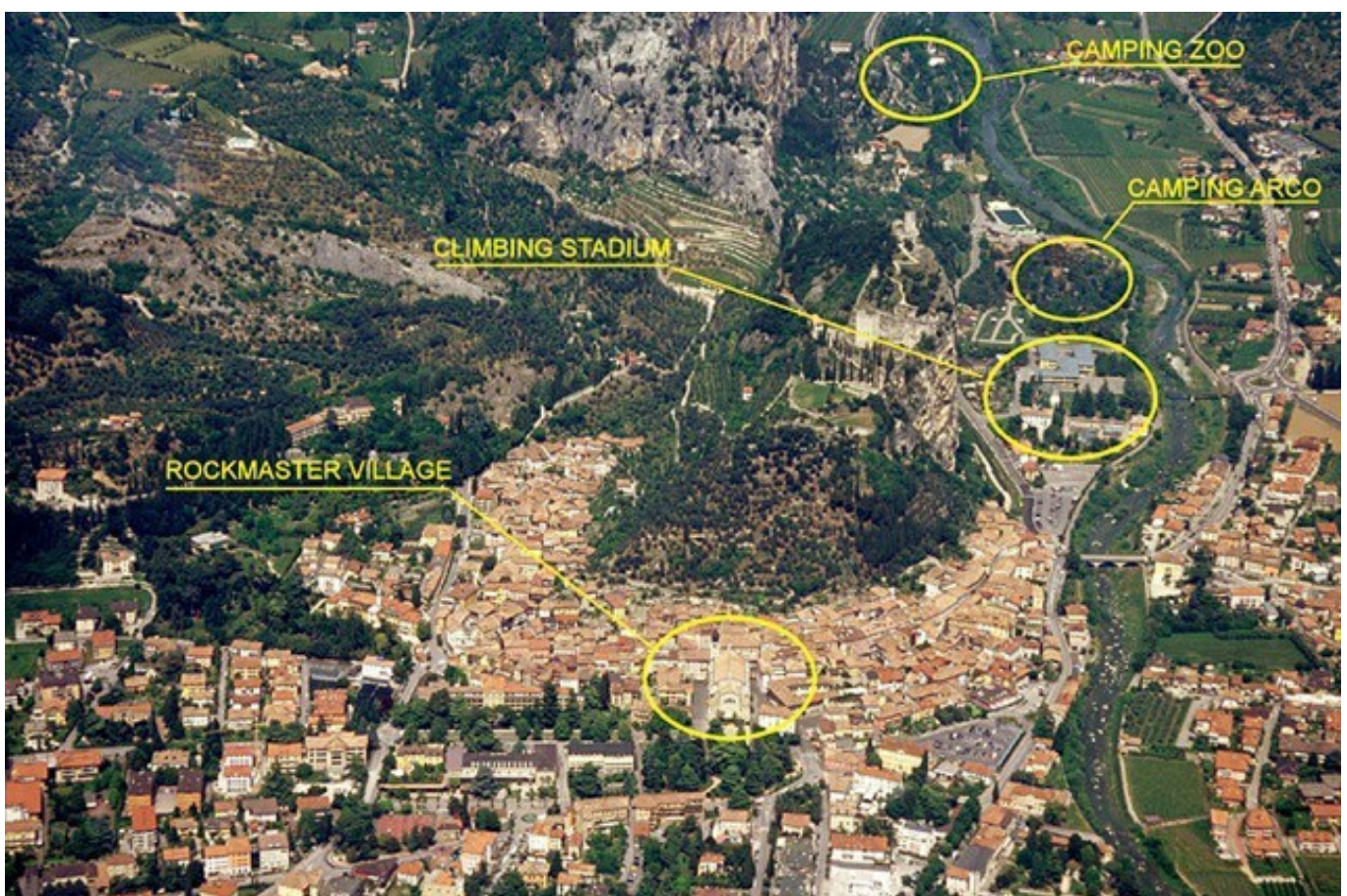
World up  
Keep  
Climbing

## ACCOMMODATION

Official Incoming Agency: RIVATOURL - info@rivatour.it tel 0039 0464 570370  
Because of tourism high season book as soon as possible your accommodations

## COMPETITION VENUE

Address:  
Climbing Stadium  
Via Caproni Maini Paolina, 26, 38062 Arco TN, Italy



IFSC PARTNERS





World up.  
Keep  
Climbing

INTERNATIONAL FEDERATION OF **SPORT CLIMBING**  
[www.ifsc-climbing.org](http://www.ifsc-climbing.org)



IFSC PARTNERS





World up  
Keep  
Climbing

INTERNATIONAL FEDERATION OF **SPORT CLIMBING**

[www.ifsc-climbing.org](http://www.ifsc-climbing.org)

# IFSC CLIMBING WORLD CUP

## IFSC OFFICIALS

IFSC Delegate: Christophe Billon (FRA)

Jury President: Jerome Chapelle (FRA)

IFSC Judge: Antonio Marcos (SPA)

Chief Routesetter: Adam Pustelnik (POL)

Routesetters: Leonardo Dimarino (ITA), Remy Samyn (FRA)

## PROVISIONAL PROGRAMME (LOCAL TIME)

<b>Thursday 24 August</b>		
	13.00-17.00.	Registration / Confirmation of attendance (Climbing Stadium)
	18.00-19.00	Technical Meeting (Climbing Stadium)
<b>Friday 25 August</b>		
	07.00	Warming up Opens - Men & Women
	09.00	Lead Qualifications Men & Women
	17.30	Speed Practice time Women then Men
	19.00	Speed Qualification Women then Men
<b>Saturday 26 August</b>		
	09.00-10.00	Lead Semifinals Men & Women - Isolation
	11.00-13.30	Lead Semifinals Men & Women - Competition
	15.00-16.00	Lead Finals Men & Women - Isolation
	17.00	Lead Finals Men & Women - Competition
	19.00	Speed Finals Women then Men
	20.30	Award Ceremony



IFSC PARTNERS

